

Castillo del Cerrado





The 54 carefully designed apartments by award winning architect Eduardo Oria reflect the typical Moorish architecture found in Southern Spain. Due to its elevation, exterior terracotta palette, secure external walls and large towers, the complex stands out from far in the distance. The apartment's exterior and indoor spa reflect the typical Moorish design elements also found in the famous Mezquita of Cordoba.



A home within Castillo del Cerrado offers comfort, sophistication, privacy, and exclusivity not often attributed to apartment living.

Enjoy the luxury of two pools, a heated spa, extensive gardens, and triple level security access. The complex is surrounded by high walls, fences and a secure entrance gate, enclosing various small-scale buildings, all access-controlled via video from the safety of your apartment. There is pre-installed fibre-optic internet and central antenna systems (satellite & terrestrial).

The apartments have panoramic sea and golf views and large terraces with a south facing aspect. Huge terraces to front and rear provide ample space for entertaining.

You enter from a small hallway into a large bright and open living area with large windows leading to terraces to front and rear. The living room has wide sliding windows which opens out onto the large terrace and offers wonderful south-facing views out over the golf course and down to the sea.

The dining room offers a second set of sliding windows out to a large back terrace. Next to the dining area is the

open plan kitchen which will be fitted with luxury German cabinets and appliances to your taste. To the back of the kitchen is the utility room for a washer and dryer.

There are two, and three-bedroom apartments available as well as large three bed penthouses with huge terraces and private plunge pool. All the apartments come with their own parking space and storage room.

The apartment has quality equipment including home automation, air-conditioning, under-floor heating in all bathrooms, and pre-installation for a cosy gas fireplace. All apartments are new and available for immediate occupation.

The community of owners specifically prohibits short-term commercial letting, however you are very welcome to offer use of your property to friends and family, commercial letting is prohibited. This ensures that there is always an intimate feel to the complex where everyone there knows each other and respects each other's peace, quiet and privacy.



LOCATIONS

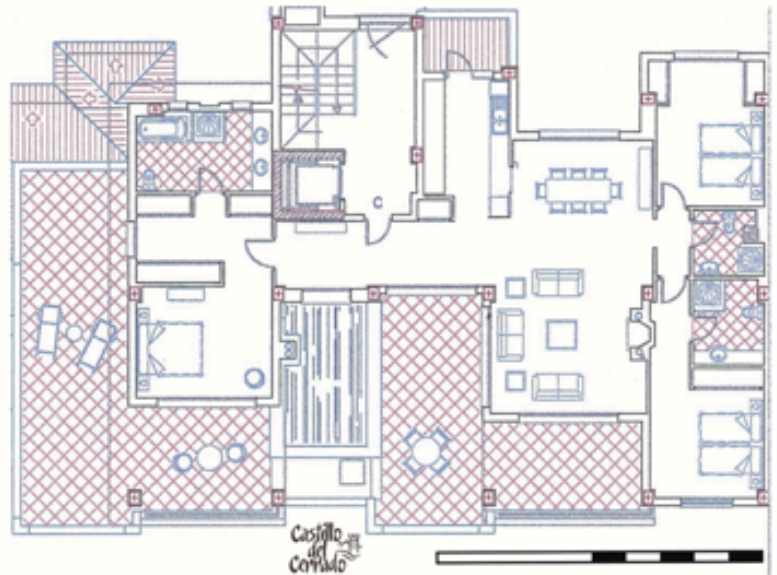
On an elevated frontline golf site, south facing over Cerrado del Águila golf course, Castillo del Cerrado has wonderful open views down to Fuengirola, to the sea and to the Sierra Nevada mountains in the distance. It has easy access down to all the shopping and dining experiences of Fuengirola town and is just a short drive to the beach and the train station.



2 BED



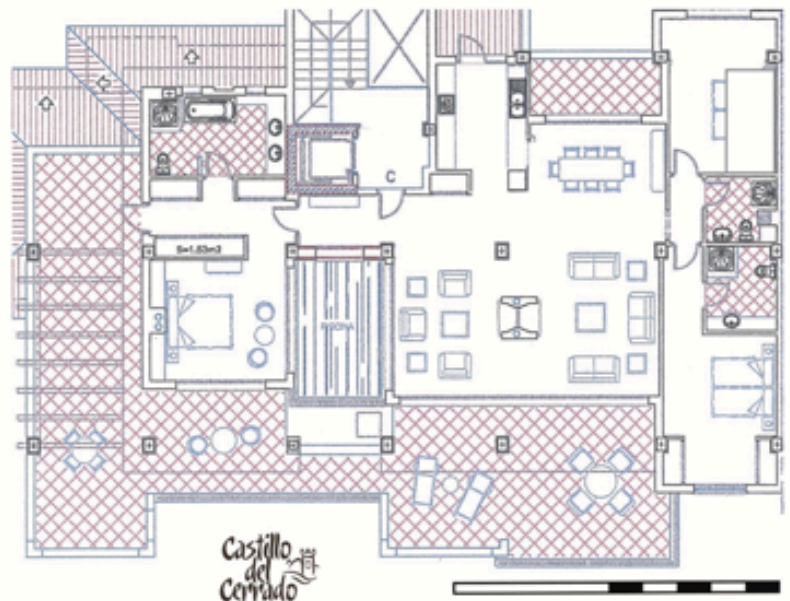
PENTHOUSE L



3 BED



PENTHOUSE XL



| Size (m ²) | 2-bedroom | 3-bedrom | Penthouse L | Penthouse XL |
|------------------------|-----------|----------|-------------|--------------|
| Internal (built) | 114.39 | 145.07 | 186.80 | 205.48 |
| Terraces | 65.88 | 75.71 | 105.20 | 117.21 |
| Garage | 1x 18.36 | 1x 18.36 | 2x 18.36 | 2x 18.36 |
| Storage | 5.20 | 5.20 | 2x 4.65 | 8.88 |

note: typical lay-out and sizes

LUXURY LIVING

Brand new turnkey apartments,
ready to move in.

Large open living space with
extensive terraces.

South facing Golf and Sea views
Many have North facing back
terraces to escape the summer heat

Complex has outdoor and indoor
pools

All units have parking and storage
rooms

Only 10 minutes to Fuengirola town
and the beach



Castillo del Cerrado

c/ Buitre 105, Mijas Costa (Málaga), SPAIN
+34 951 562 336
info@castillodelcerrado.com
www.castillodelcerrado.com